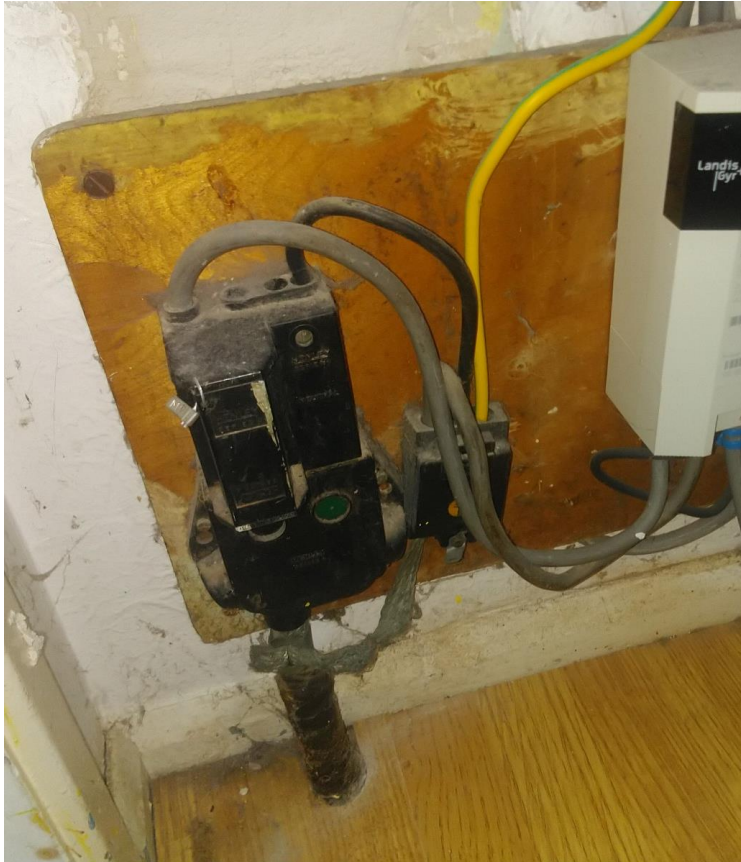


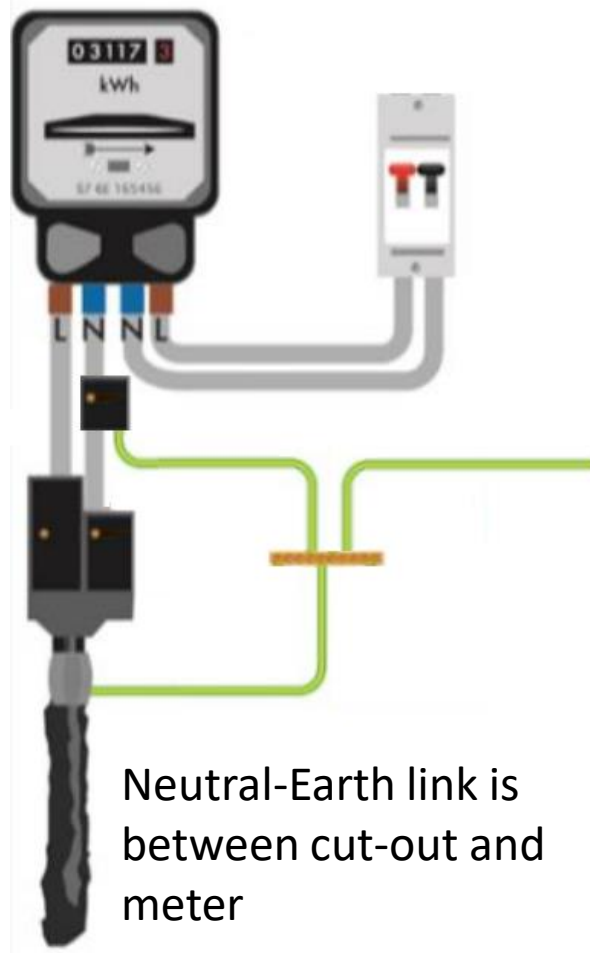
B07

RETAIL ENERGY CODE

The photo below shows an example of the scenario that is reportable to the DNO.

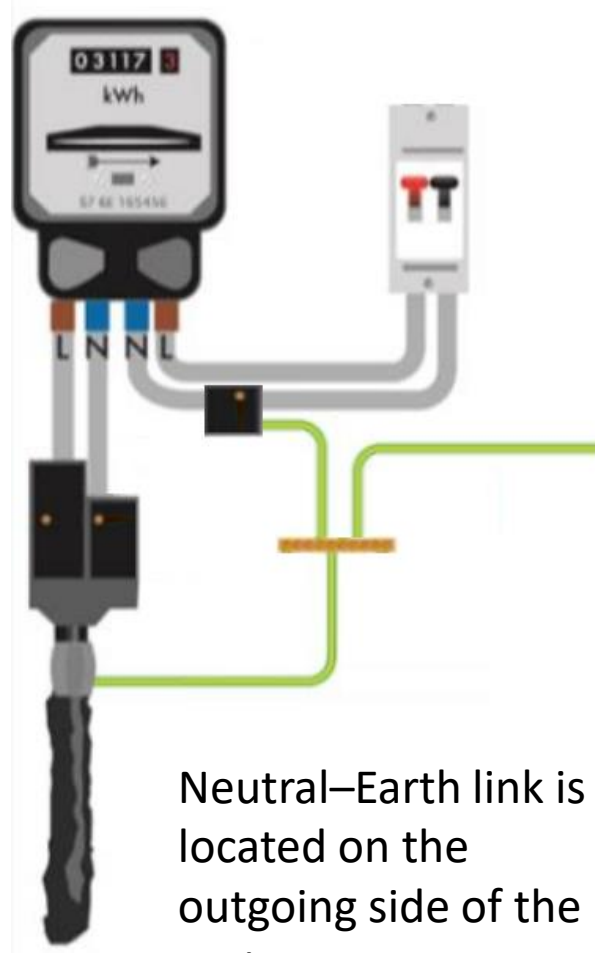


Three Scenarios



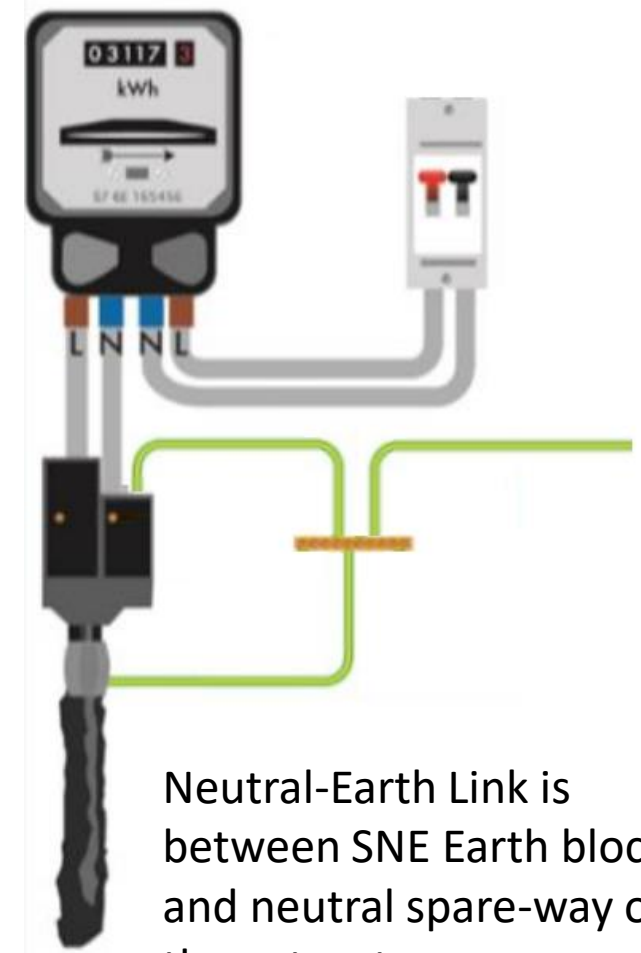
Neutral-Earth link is
between cut-out and
meter

Report as B07



Neutral-Earth link is
located on the
outgoing side of the
meter

Customer Fault Card

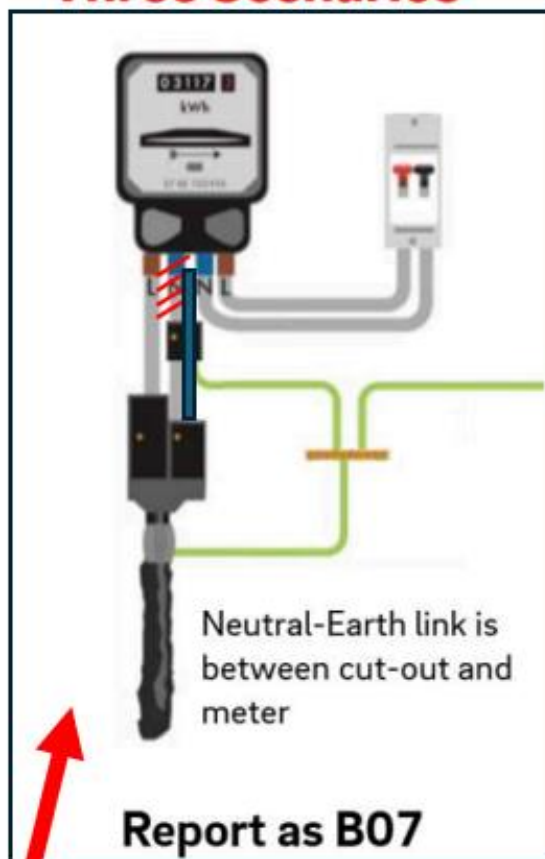


Neutral-Earth Link is
between SNE Earth block
and neutral spare-way of
the cut-out

Treat as PME

B07

Three Scenarios



Customer Fault Card



Treat as PME

WE are
UK Solutions

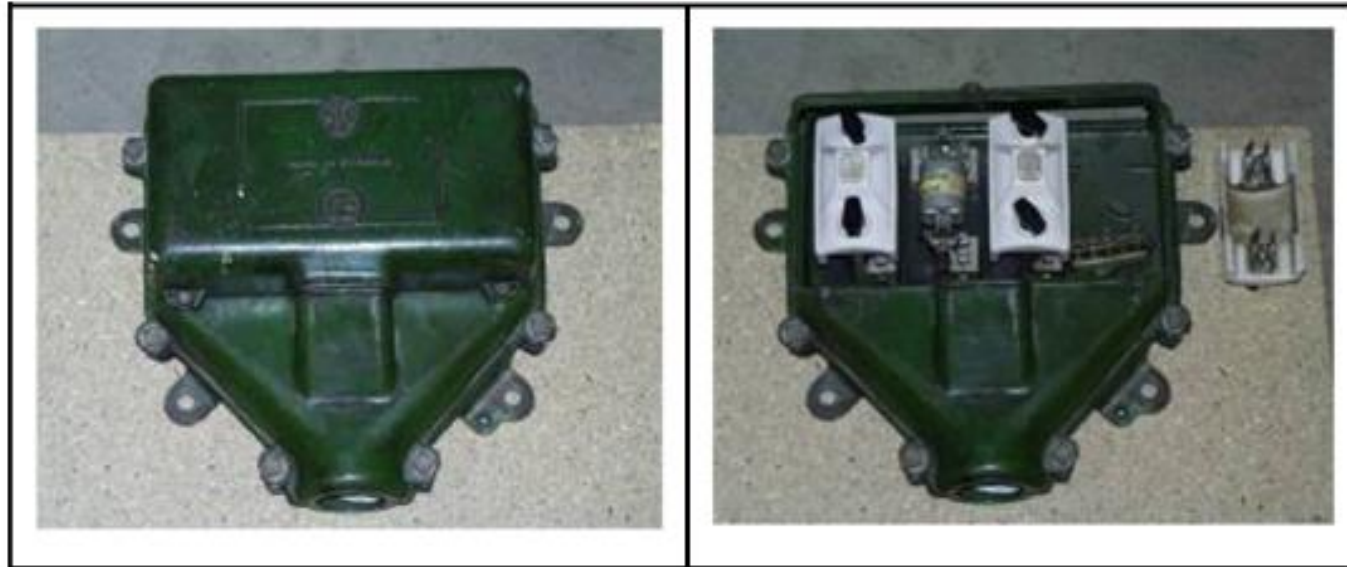


QUESTION Can we disconnect the cable from the connector block and the incoming neutral in the meter and then replace it with another cable from the spare port from the neutral side of the cut out into the incoming side of the meter. This will effectively treat it the same as scenario 3 (treat as PME). In doing this you do not have to disconnect or disturb the earth.

Unhinged Metal clad Cutout Embargo?

Appendix B – Cut-outs not to be Worked on

B1 ISCO 3 Phase Cut-out (lid not hinged)



On this type of cut-out, the fuse cover is fixed by screws only and has no hinges to hold the cover captive to the body of the cut-out. The cover **must not** be removed unless the incoming supply has been made dead. This is to guard against the risk of a flashover caused by the lid slipping when being removed and making inadvertent contact with live metalwork inside the cut-out. **The cut-out shall be changed, prior to a meter change.**